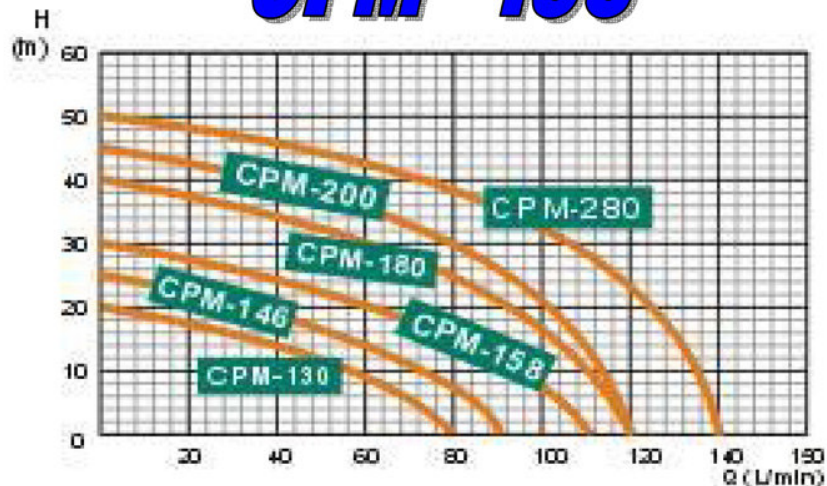


Centrifugal Pump

CPM - 158

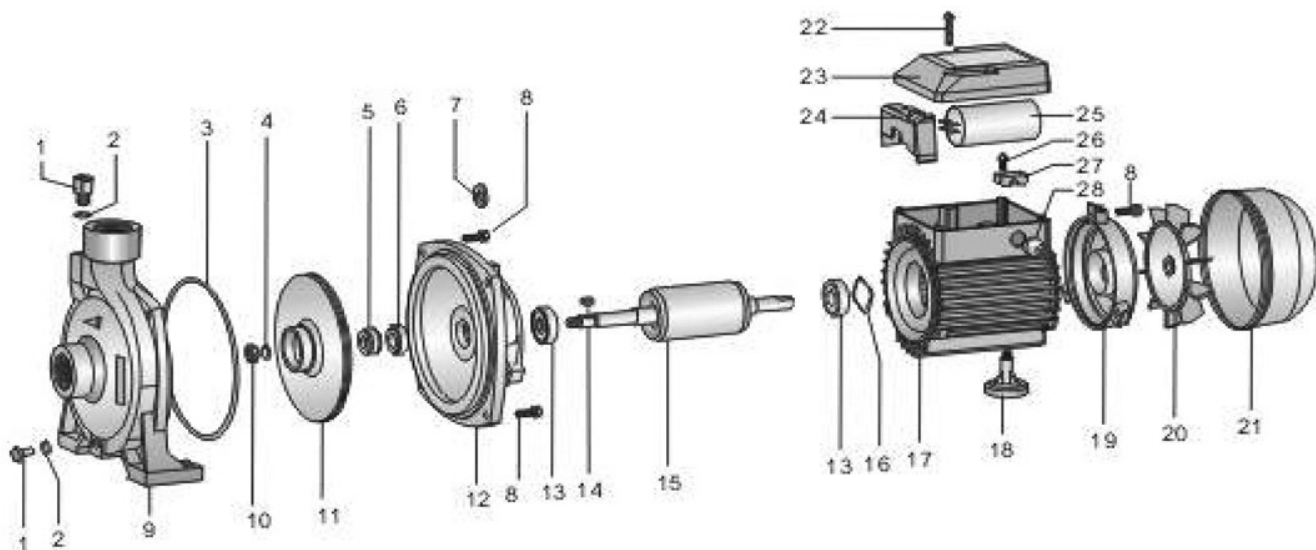


Pump body: Cast Iron
 Impeller: Brass/ Noryl/ Aluminum
 Motor : Closed, externally ventilated
 Insulation class: B and F
 Protection class: IP44 or IP54
 Mechanical seal: Stainless steel / Carbon-ceramic
 Shaft: 45# Steel / Stainless steel
 Thermal protector (if required)

The normal power standard is 220V 50Hz single phase.
 Three phase 220/380V/50Hz, 220/440V/60Hz,
 Single phase 230V, 240V, 127V, 110, 115V/60Hz,
 Model are available on request.

TECHNICAL DATA

Model	Power		Ampere(V)		Speed (r.p.m)	Q.Max (L/min)	H. Max (m)	S.Head (m)	Pipe dia (mm)	N.W. (kg)
	HP	kW	1-220	3-380						
CPM-130	0.5	0.37	2.7	0	2850	85	20	9	25×25	9.5
CPM-146	0.75	0.55	3.6	0		90	25			12.6
CPM-158	1	0.75	5	0		110	30			14.7
CPM-180	1.5	1.1	7.5	3.5		120	40			23
CPM-200	2	1.5	9.6	4.9		120	45			26
CPM-280	3	2.2	13.5	6.3		140	50			27



- | | | |
|----------------------------|-------------------------------|------------------------|
| 1. plug | 11. impeller | 21. fan cover |
| 2. gasket | 12. front cover | 22. screw |
| 3. o-ring | 13. bearing | 23. terminal box cover |
| 4. spring washer | 14. key | 24. terminal block |
| 5. rolling mechanical seal | 15. rotor | 25. capacitor |
| 6. fixed mechanical seal | 16. wave-form washer | 26. screw |
| 7. drop guard | 17. motor housing with stator | 27. cable holder |
| 8. screw | 18. support foot | 28. cable gland |
| 9. pump body | 19. end cover | |
| 10. nut | 20. fan | |